

# Titan Board Installation (not in a panel)

Last revised 5-1-17

## Equipment needed:

- Tape measure
- Level
- C clamps or hand clamps
- Impact driver or screw gun
- #3 square drive bit(s)
- 1/8 inch thick spacer

## Materials needed:

- ¼-14 x 2" long stainless steel self drilling square drive screws (4 per board)
- Titan boards 1 for every linear foot of dock

Step 1: Determine the Titan board needed for your dock or pier. Non-reinforced boards work on stringers up to 16" on center. Reinforced boards are needed for spans greater than 16" and up to 24"

Step 2: Measure the dock/pier and determine the number of Titan boards that will be required.  
1 board will be needed for each linear foot of dock.

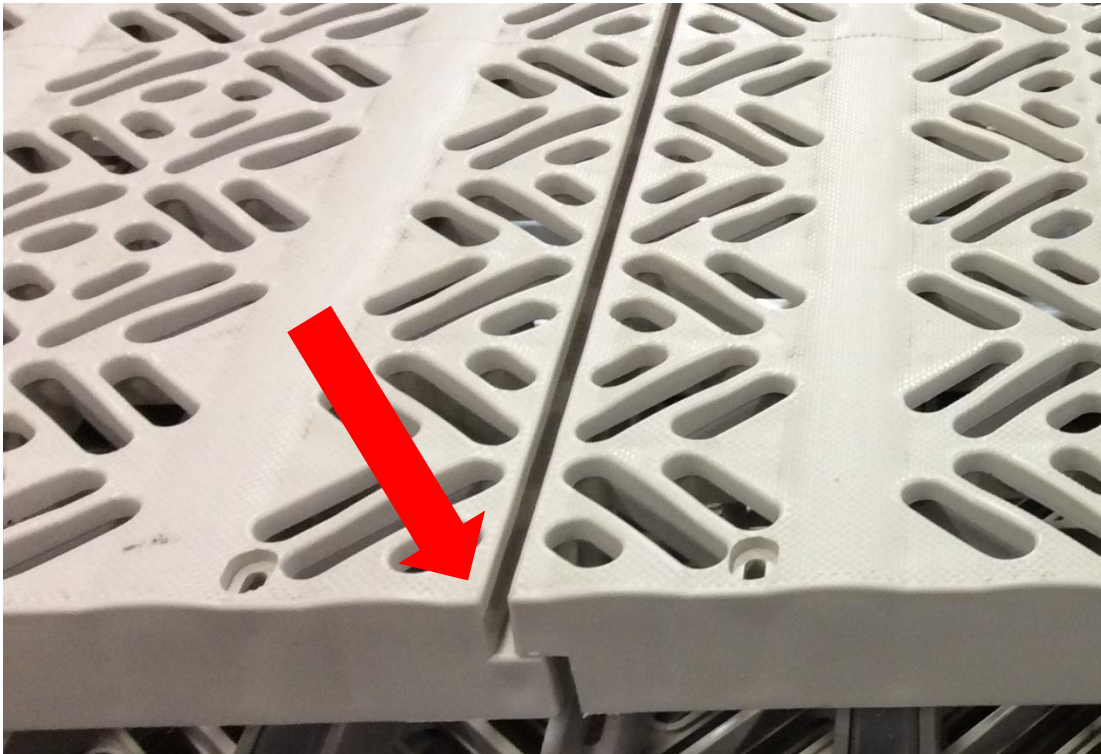
Step 3: Remove your old decking and clean away any debris from the top of the frame.

Step 4: Do any needed repairs to the dock frame and insure the dock is level and structurally sound before proceeding.

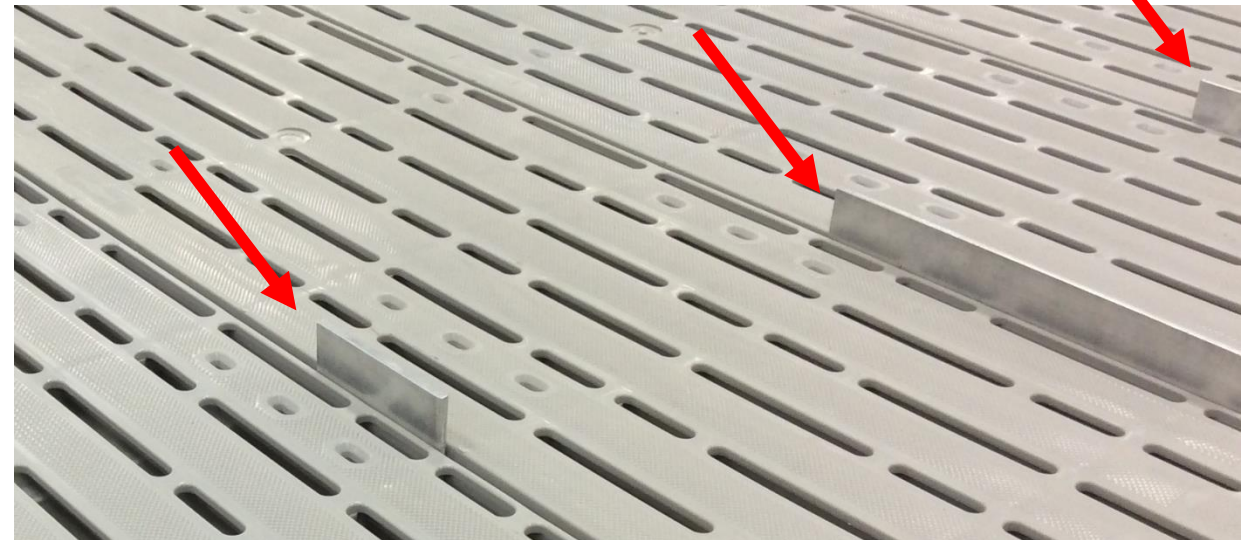
Step 5: Lay out the Titan boards on the dock frame with overlapping ends as shown in photo #1.

Step 6: Place spacers between boards to allow for expansion (see photo #2). 1/8" spacers are ideal. Do not space boards more than 7/32" apart. The spacing will vary depending on your dock length. In some cases you may need to trim a board length wise (using a table saw works best – may require metal cutting blade if reinforced).

**Photo #1**



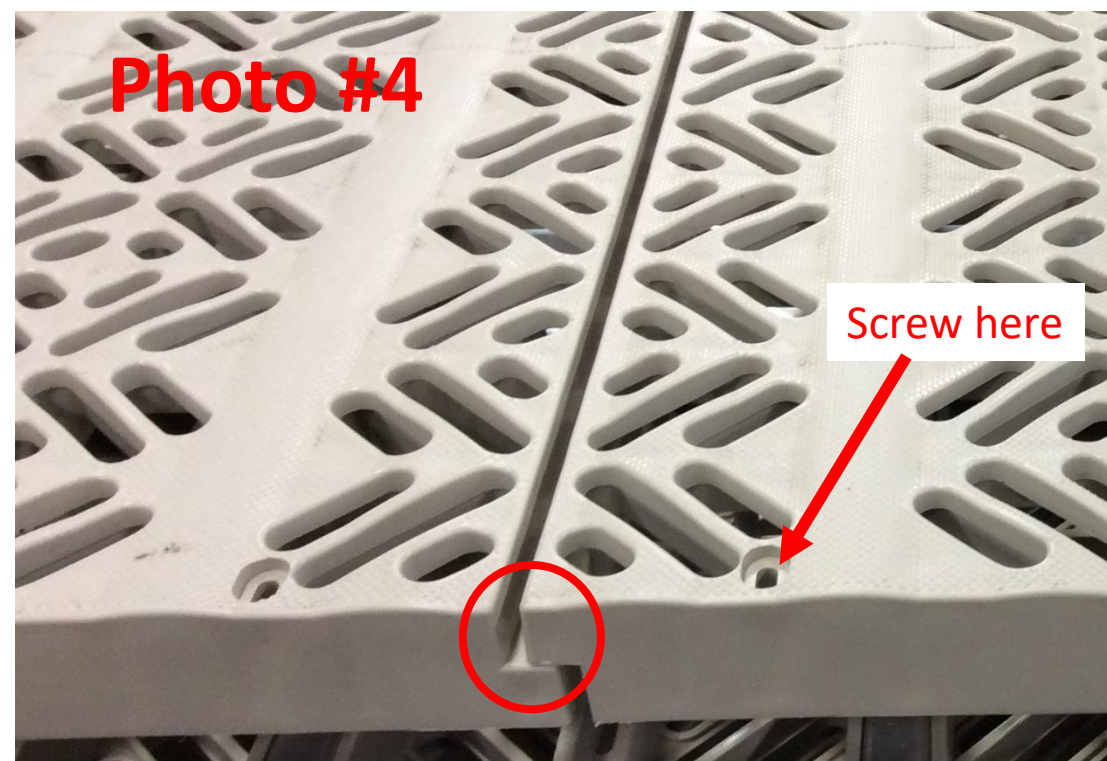
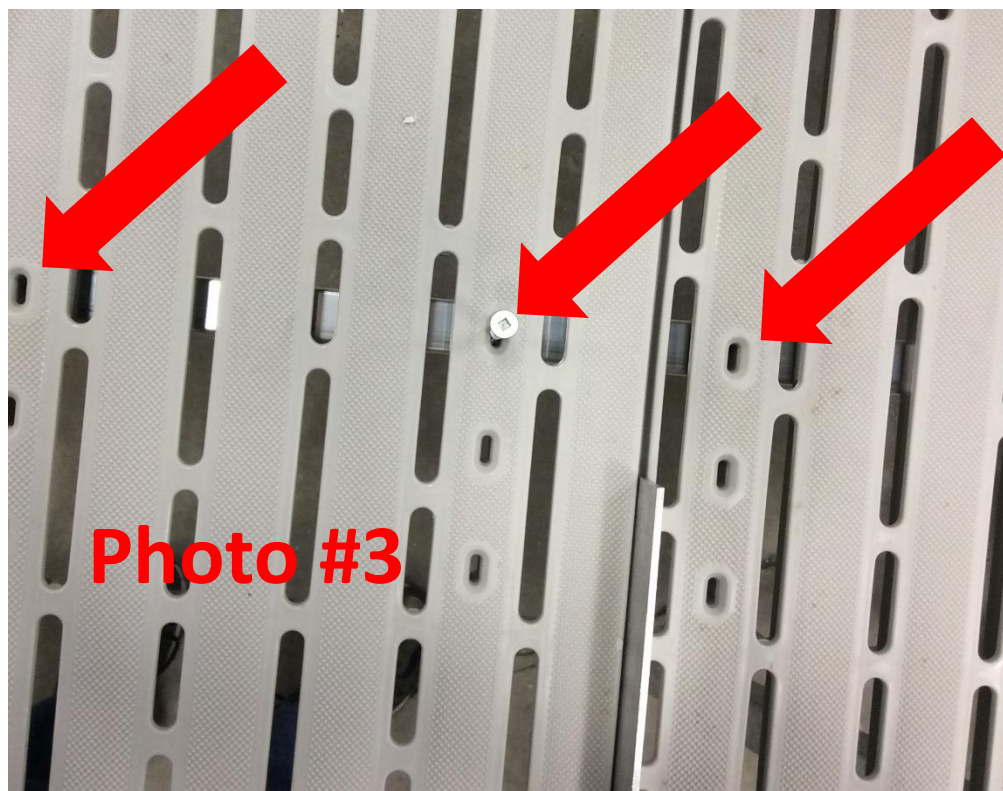
**Photo #2**



Once you have the Titan boards evenly spaced, you are ready to begin attaching them to the frame.

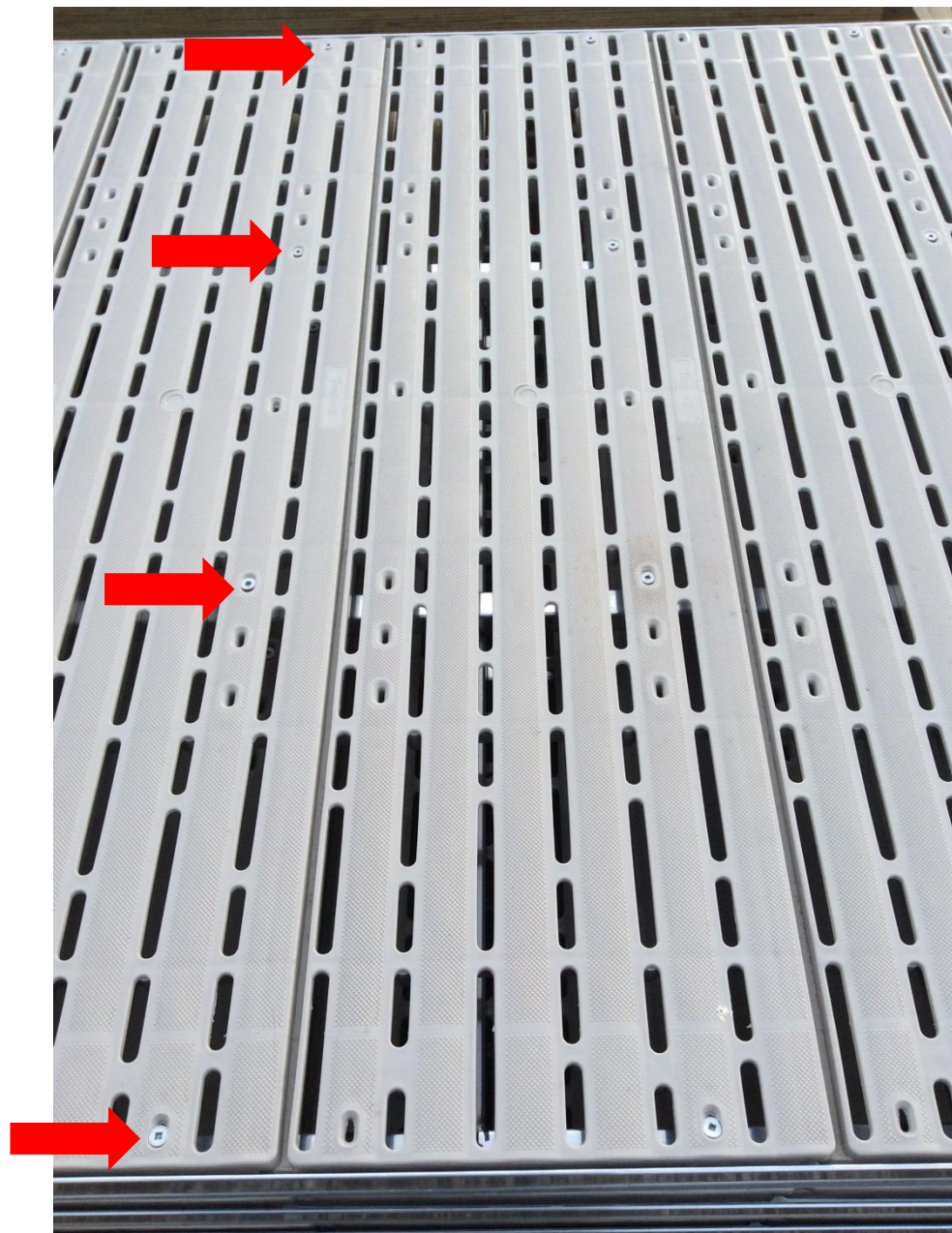
Step 7: Clamp the first board to the frame using hand clamps or C-clamps. Ensure the frame and board are square.

Step 8: Locate the spots where the frame stringers line up with the slots in the Titan boards (see photo #3)  
The edge of the board that you want to secure to the frame is the edge with the protrusion on top (see photo #4).

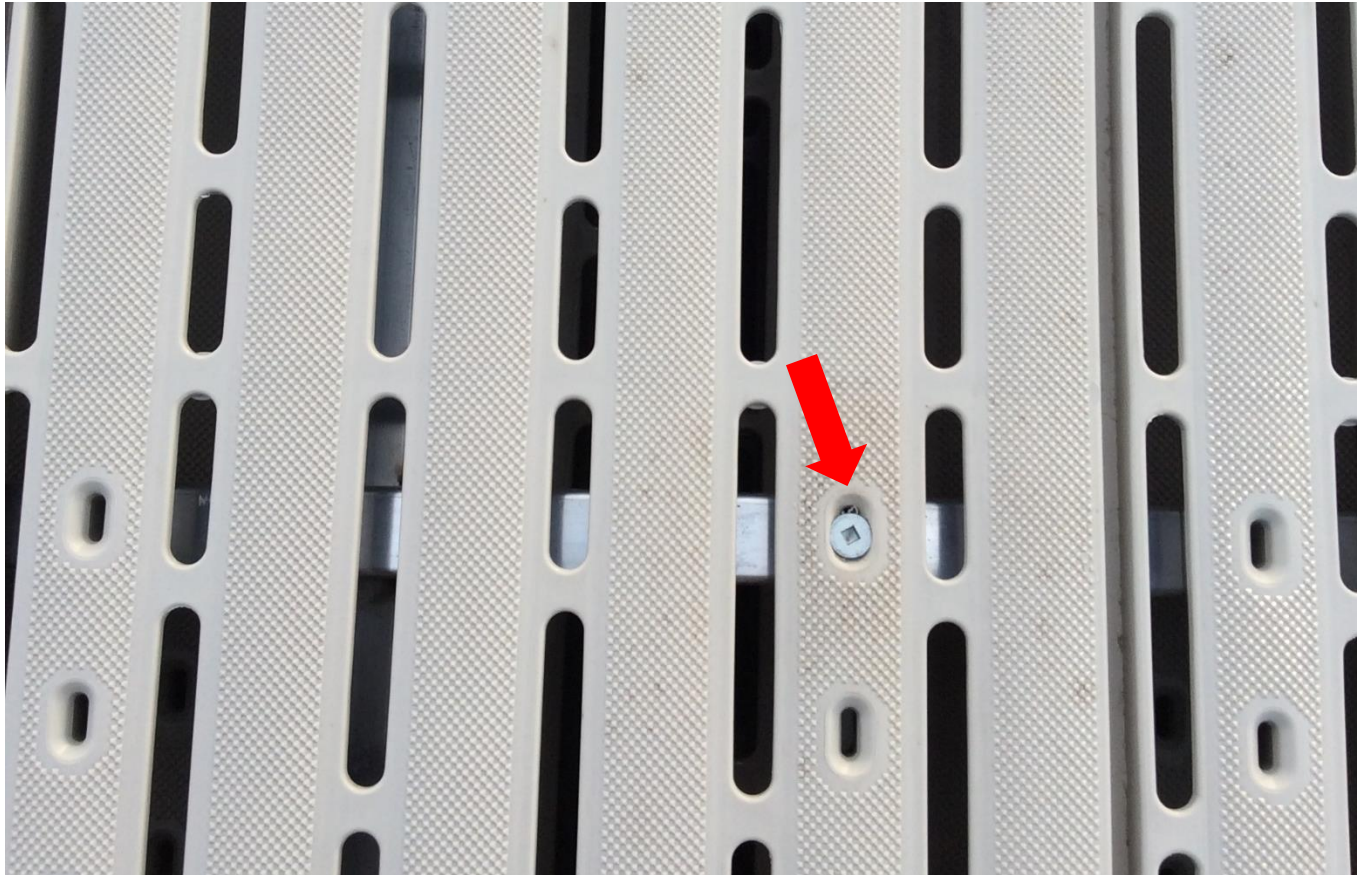




Note: Each panel should be attached with all screws across the same edge of the board (see photo #5). See step #9 for tightening instructions. The number of screws will vary based on length of boards and stringer spans.

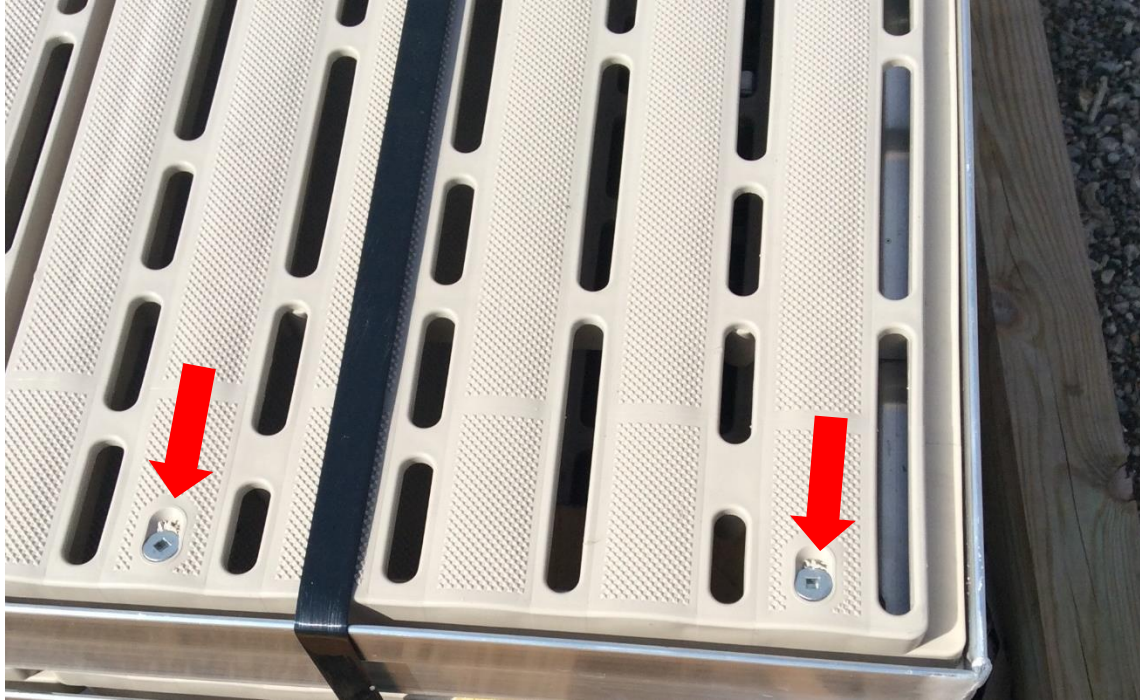


Step 9: Using the proper screw, attach the Titan board to the frame. Screws should be tightened until the board is tight against the frame, but do not over-tighten. Screw head should be flush with, or just below the deck surface.





Step 10: On the last Titan board, you will need to screw down the board on both the edge with the protrusion on top, and the edge with the protrusion on the bottom (opposite edge).



Step 11: Remove the spacers from between boards and clean up.

Final step: Relax and enjoy your beautiful, low maintenance Titan decking!

