

600048 24 Volt Solar Remote Controlled Air Assist Pump

600051 24 Volt Solar Manual Controlled Air Assist Pump

600052 110 Volt Remote Controlled Air Assist Pump

600053 110 Volt Manual Controlled Air Assist Pump

READ INSTRUCTIONS IN THEIR ENTIRETY PRIOR TO INSTALLATION



NOTICE: The 600048 and 600051 kits require the purchase of (2) 12 volt batteries. Recommended battery is a group 24 deep cycle marine battery.

Tools required for installation:

Large flat head screw driver

Small flat head screw driver

Socket set

1/2" drill bit

Cordless drill

The 600048/51 kit will arrive in 4 boxes.

Box 1 contents: Pump

Box 2 contents: Battery box with solar panel

Box 3 contents: 2 mounting brackets and hardware kits

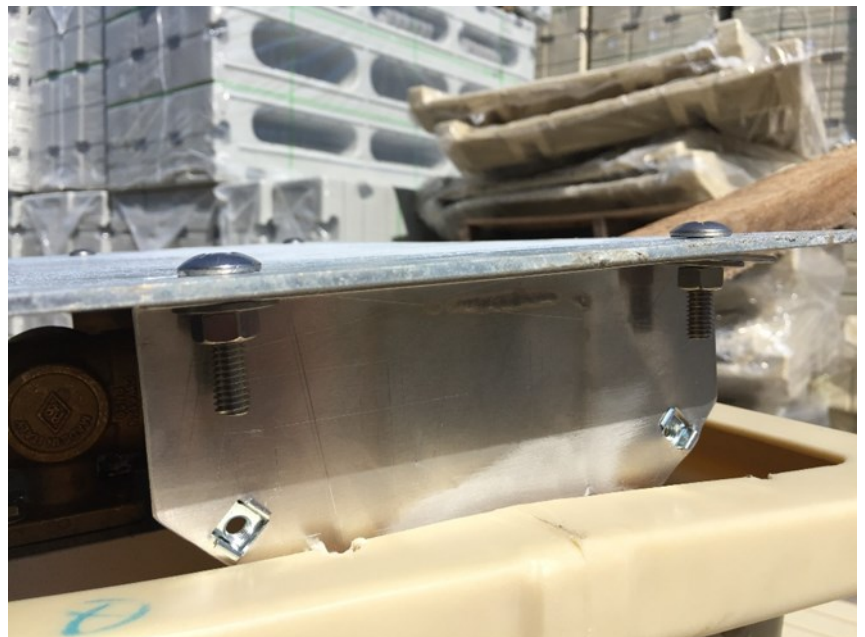
Box 4 contents: Hose kit

600048, 600051, 600052, 600053 Pump Kits - Pump/Control Housing Installation

1. Lay the S30705GV bracket onto the bottom of the pump mounting bracket. Ensure that the 4 slots in the both brackets line up with each other and mark these locations.



2. Using a 3/8" drill bit, drill through one wall nearest the bracket. TAKE CARE NOT TO DRILL THROUGH BOTH WALLS! This is to give clearance for a bolt, nut, and washer. Bolt the frame and bracket together using the supplied bolts, washers, and nuts. You may be required to unbolt the frame from the housing to complete this step.



3. Next will be to bolt the bracket to the molded in t-nuts on the dock section using the 5/16 bolts and washers.



4. Slide supplied hose onto the fitting shown in the picture below, then tighten a hose clamp to secure the hose. Attach the other end to the float tank on the boat port, also with a hose clamp. The other fitting does not require a hose to be attached to it, as this is an air outlet vented to the atmosphere.

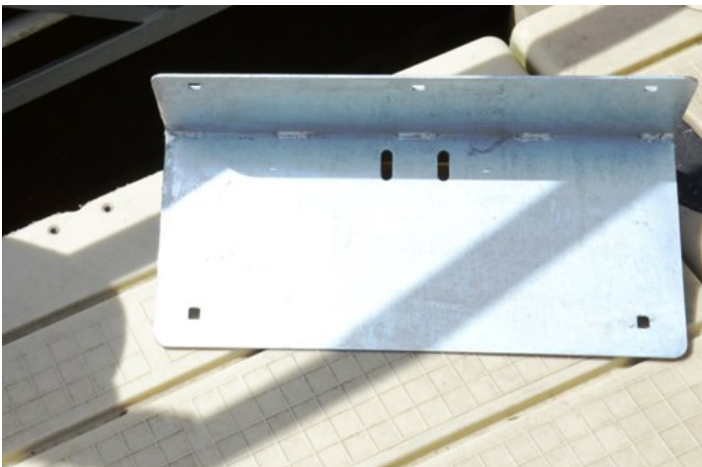


5. If you have purchased a 600052 or 600053 110V pump units, you may now plug the 110V plug to the 110V outlet. At this point, you can check to make sure the pump is operating normally via the remote option on the 600052 or the manual method on the 600053 pump. **NOTE: IT IS NOT RECOMMENDED TO RAISE THE LIFT TO THE COMPLETE UP POSITION WITHOUT A WATERCRAFT ON THE PORT.**

Congratulations, you have successfully installed your boat port pump and may begin using the port immediately. As with all other EZ-Dock product you will have years of enjoyment.

600048 & 600051 24V Solar Powered Pump Kits - Battery Box Installation

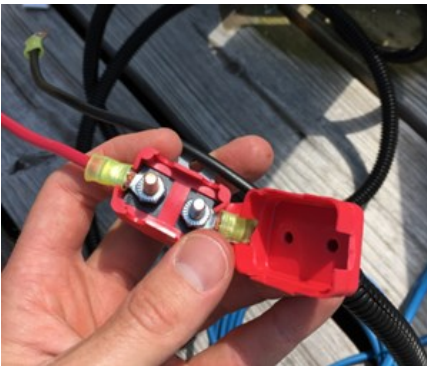
1. Select a location for your air assist pump and battery box. These brackets mount to t-nuts located around the perimeter of every dock section. Ideally, they are located next to each other.



2. Mount the battery box bracket to the dock using the supplied ½” Phillips heads bolts and washers. Place the battery box on the bracket and mark the locations on the back of the box where the square holes are. Drill these locations. Mount the battery box to the bracket using the half inch carriage bolts, washers, & lock nuts.



3. Place batteries inside battery box. Use supplied jumper wire to connect the POSITIVE post on battery 1 to the NEGATIVE post of battery 2. Locate power wires coming from pump. (They will have a black sheath & red power wire contains a bolt in fuse). Run these wires through the grommet in the box. Attach the red power wire to the POSITIVE terminal on battery 2, and the black wire to the NEGATIVE terminal on battery 1. The bolt in fuse wires will need to be removed and re-attached to do this.



4. With the pump housing detached from the pump frame, you can now install the wiring for the pump to the battery box/solar panel. The pump should come with the + and – terminals of “Battery 1” already connected to the control unit (these are the wires that go to the battery box in step 3 of installing the battery box). The extension wires from the pump install kit will get connected to the solar panel wiring (these wires are designated +/-). Run these extension wires through the split grommet in the battery box and connect them to the control unit on the pump in the + or – location respectively to the solar panel.



Optional – Remote Control Installation (PN. 600048)

All wiring for the remote control unit should already come pre-wired except for the blue Ethernet cable. Plug the one end of Ethernet cable to “SIGNAL IN” on the valve actuator. Factory recommendation is to put the remote transponder on the back of the pump housing via double sided sticky tape as seen in photos below.

With fully charged batteries you may now test your solar power remote control kit for proper operations. **NOTE: IT IS NOT RECOMMENDED TO RAISE THE LIFT TO THE COMPLETE UP POSITION WITHOUT A WATERCRAFT ON THE PORT.**

VERY IMPORTANT - DO NOT CUT THE ANTENNA OF THE TRANSPONDER! THIS WILL REDUCE SIGNAL STRENGTH SIGNIFICANTLY!

VERY IMPORTANT - DO NOT CREASE THE BLUE ETHERNET CABLE! THIS WILL REDUCT THE PERFORMANCE OF THE REMOTE CONTROL UNIT!

